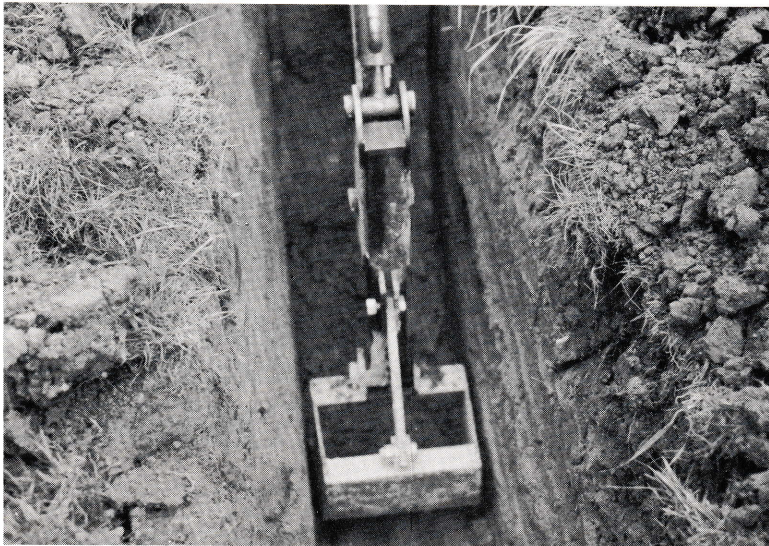


**INTRODUCING
THE
NEW**

GRAVELY MiniBackhoe
The ConTractor



Reach out 6½ feet, get a full bucket every time . . . less move time, more dig time.



Go deep — to five feet. Easy controls. Efficient design gives you maximum reach and depth, even in close places.



GETS IN THE PLACES

OTHERS CAN'T. Retract the legs, go through the garden gate, or into the backyard, between narrow buildings . . . into the tight corners where big equipment can't go.

DIGS DEEP, DIGS TRUE — AT LESS

COST. Big equipment costs big big money.

The Gravelly ConTractor does the same job, at one-third the initial cost for bigger rigs. Digs to five feet deep, 16" wide.

Digs faster than five men at top speed.

Right along the line too — easily.

BIG JOBS OR SMALL — EASY TO HAUL!

Whether its tile for a septic tank or excavating for a basement, the ConTractor does the job efficiently, at low cost. And when you go to the next job, just run it up on the pick-up truck and away you go — no road travel at low, time-consuming speeds — or big truck expense to move from job to job.

Up and out fast and easy 90° swing, 45° to either side.

WM. A. SOMMER CO.
4000 SO. DIXIE HWY.
PH. WY. 1-3898 LIMA, OHIO

See specifications, other facts →



GRAVELY MiniBackhoe

Powerful—Rugged—Dependable— Gets the job done fast at less cost.

UTILITIES

Trench for pipe, conduit. No huge scars to reseed—no rutted lawns from heavyweight equipment. And you can get to the job!

CONTRACTORS

If there's a ditch to dig, give yourself the luxury of choice—the big one or the little one. The Gravely MiniBackhoe will do the job often—and do it cheaper!

HOME BUILDERS

Basements, foundation trenches, septic tank tile ditches, if there's digging to be done the Contractor will do it—faster and less expensively than hand labor or high-priced (even by the hour!) big equipment.

CITIES

Landfill, trenching, ditching...

INDUSTRIES

Somebody's always buried something they want dug up later. The MiniBackhoe gets in the places the big stuff can't—beats men by a mile.

COUNTIES

Roads, ditches, where there's a man with a shovel, there should be a Gravely!

ROAD CONTRACTORS

Here's one that goes anywhere without having to bulldoze a road for it eight feet wide. A MiniBackhoe that loads on a pick-up and goes fast to the next job—that gets the little, time consuming jobs done while the big equipment is digging big.

CEMETERIES

Graves, utility lines, ditches, foundations. Digs deep, digs fast.

YOU ...

If you're a digger ... dig the Gravely!

Why send Goliath to do David's job? The Gravely MiniBackhoe is a real hum-digger—a small package with the power and design to do the digging job fast, at less cost. Less cost initially, less cost for maintenance, less cost for operators.

Just watch it once—you'll be amazed at how fast the ditch unravels from in front of that fast swinging bucket.

You'll see you'll literally be digging dollars every time the boom swings!

Try it and see—it's backed by Gravely's 50 year reputation for sturdy, rugged equipment that does the tough jobs fast—and right!

All hydraulic controls—simple to learn, simple to operate.

Powered by the rugged, long-lived Gravely Tractor.



SPECIFICATIONS

Length (Not including Handles) 10'6"

Length (with handles) 11'6"

Front pads, width: 65" (Retractable)

Dual Wheel Width: 37"

Boom Down, Height: 45"

Boom up to Max. Height: 5'6"

Total Swing: 90°; To either side of center, 45°

Maximum digging depth: 5'

Effective Reach: 6'6"

Power Plant: Gravely Tractor. Transports and operates a 2000 psi, gear-type hydraulic pump supplying power to 3 Spool control valves through 4000 psi hydraulic lines with heavy-duty fittings. Valves 1000 psi.

Construction: Welded frame, boom, and components except Power Plant and Hydraulic cylinders and controls.

Tires: Dual, pneumatic, 4:00 x 8.

Fuel: Gasoline, Capacity, 1³/₄ Gallons.

GRAVELY

TRACTOR DIVISION
Studebaker
CORPORATION

1 GRAVELY LANE

DUNBAR

WEST VIRGINIA 25064

GRAVELY



Power
Systems